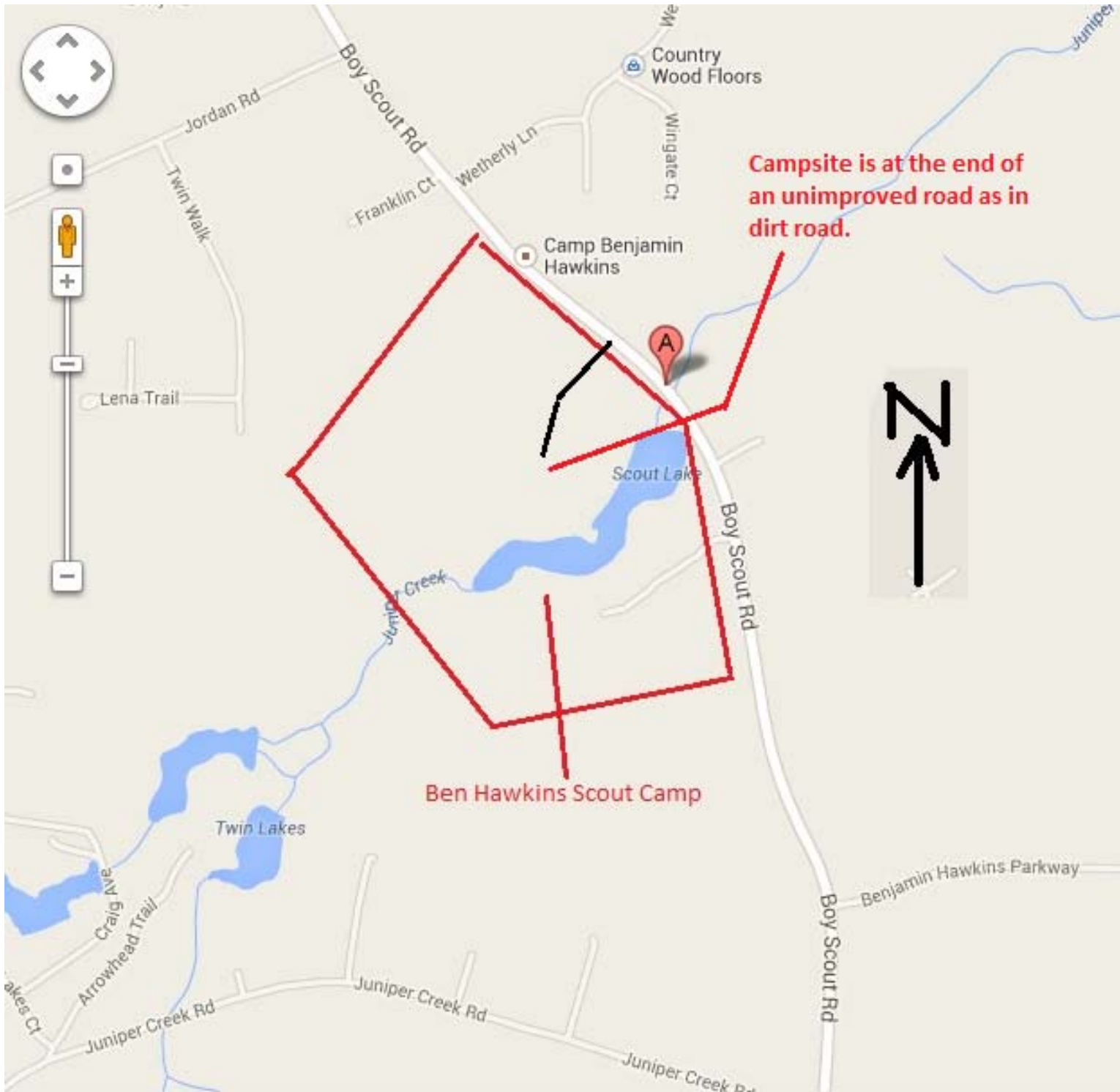


The map begins in Byron on Georgia 49. Coming from the east on Georgia 49, after you cross I-75, turn northward at the first red light.



Once you reach Camp Ben Hawkins, do not go through the camp's main gate – we will not be there nor can you reach our camp from there by car. Continue on Boy Scout Road past the main gate & through the valley crossing the stream at the A point on the map. After crossing the stream, everything will look desolate on both sides of the road. Slow down. You will need to be looking for an unimproved road, i.e. dirt road (no gravel or any other improvement) on the left, i.e. the west side of the road. The road should have a cut-off

telephone post on each side of the road with a cable laying on the ground. If you start seeing houses on either side of road, you missed the turn.

Once you are on the unimproved road, go to the end of the road to where it runs into another unimproved, crossing road that makes a T intersection. The camp site will be on the left side at the T intersection.

Beware! Those roads can get very sandy & you can get suck in the sand. You can drive your cars close enough to the camp to unload but you will need to park your cars for the overnight at the parking sites on the road you came in on.